

# R

RIPP SPORTING



PRE-TRIP INFORMATION

*Farquhar Atoll*

THE MOST DIVERSE FISHERY IN THE OUTER ISLANDS OF THE SEYCHELLES

---

[www.rippsporting.com](http://www.rippsporting.com)

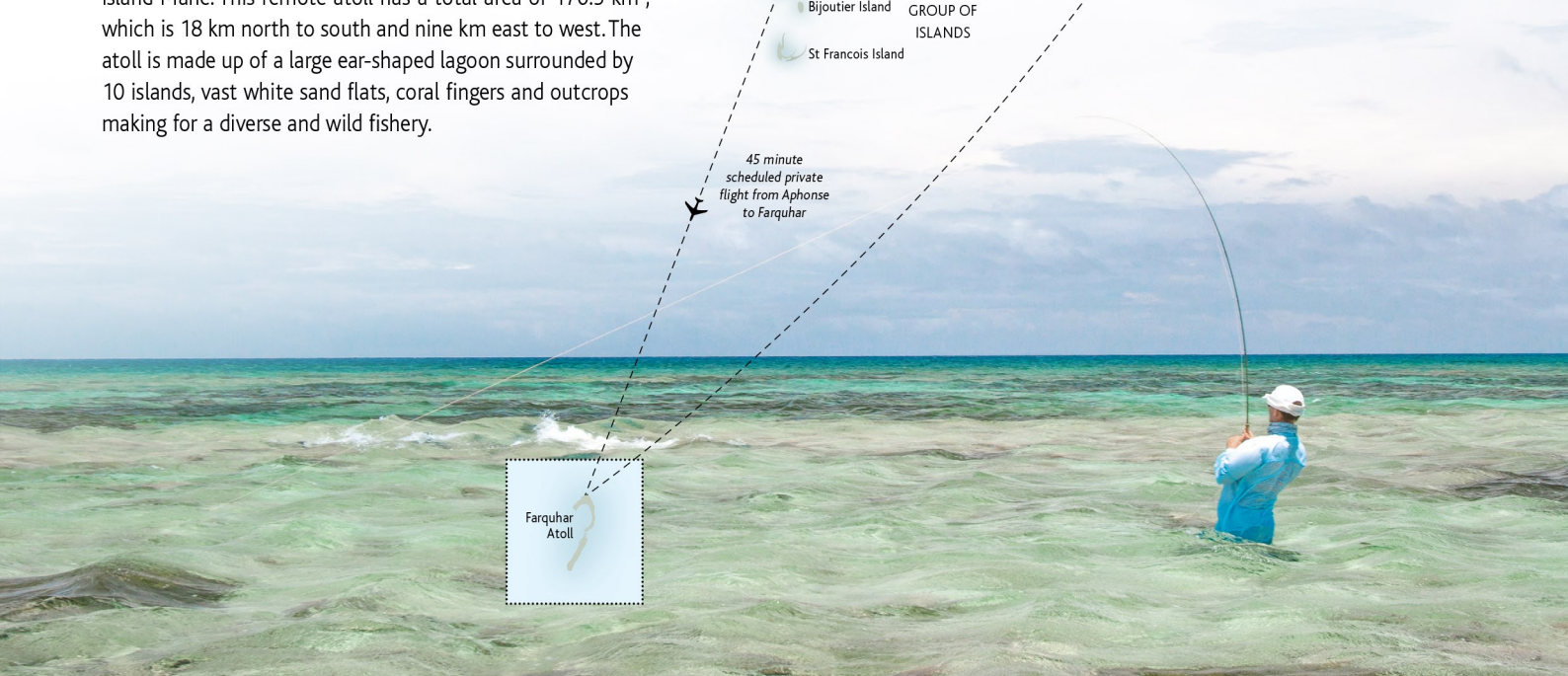




# Farquhar Atoll



Farquhar Atoll is the most southerly atoll in the Seychelles chain of islands lying just over 700 km to the southwest of the main island Mahé. This remote atoll has a total area of 170.5 km<sup>2</sup>, which is 18 km north to south and nine km east to west. The atoll is made up of a large ear-shaped lagoon surrounded by 10 islands, vast white sand flats, coral fingers and outcrops making for a diverse and wild fishery.





# FARQUHAR ATOLL

*One of the few Seychelles destinations where you will have the chance to target bumphead parrot fish*

## WHAT YOU CAN EXPECT WHILE FISHING AT FARQUHAR ATOLL

Farquhar consistently produces some of the finest saltwater flyfishing on the planet. The huge variety of species, together with its diverse flats and offshore scenarios make Farquhar a complete saltwater experience for the travelling angler.

Our core flats species include GT's, bonefish, bumphead parrotfish, moustache triggerfish, yellow margin triggerfish and bluefin trevally, however many others do call Farquhar home and are possible during a trip. These include barracuda, Indo-Pacific permit, golden trevally, napoleon wrasse, bohar snapper and many more.

Offshore flyfishing allows our guests to target species of deeper depths such as yellowfin tuna, milkfish, sailfish, wahoo and dogtooth tuna, to name a few.

So whether you're looking to cast your fly at tailing bumphead parrotfish, that trophy GT you have been dreaming about or you're looking for a complete saltwater experience, Farquhar Atoll is a great choice!



## YOUR ITINERARY...

**DAY 1:** Your charter flight departs Mahé from the IDC hangar and lands on Farquhar one-hour forty-five minutes later. Flights may be diverted to Alphonse Island on occasions, which would entail a one-hour flight to Alphonse Island, a half an hour break on the ground and then a further forty-five minute flight to Farquhar Atoll. The group is then transferred to the Farquhar Guest House for orientation and tackle set up.

**DAY 2-6:** Breakfast at 07h00, teams to be ready to leave the camp at 08h00 for fishing. There is a choice between a packed lunch or lunch at the guest house. At 16h30 your team will head back to the camp. Pre-dinner drinks will commence at 18h00 and dinner will follow.

**DAY 7:** Breakfast at 07h00, teams to be ready to leave the camp at 08h00 for fishing. There is a choice between a packed lunch or lunch at the guest house. At 16h30 your team will head back to the camp. There will be time in the evening to de-tackle your gear with snacks and cold refreshments so that you are able to pack your rods, reels and fishing gear away in preparation for departure the following morning.

**DAY 8:** The departure time of the flight will be confirmed with you at dinner the evening before departure day. You will be transferred to the airport where you will board the Charter flight, possibly divert to Alphonse, landing at the IDC hangar in Mahé one hour and forty-five minutes later.

## FLEET & GUIDES

### TENDER BOATS

Five purpose built skiffs are left on anchorage at Farquhar Atoll, making for a slicker experience. These skiffs will be skippered by our experienced, world class and professional Alphonse Fishing Co. Guides.

### OUR GUIDES

The Alphonse Island Fishing Co. Guide team along with the Island Conservation Society ensure the fishery at Farquhar is protected from over fishing. The Guides are conservationists at heart and some of them also hold qualifications in the field of ecology.

#### ALL ALPHONSE FISHING CO. GUIDES:

- Are professional, passionate and extremely experienced with all facets of fly fishing in these remote saltwater destinations.
- Are fluent in English [some speak French and Creole].
- Carry waterproof VHF radios and are in constant communication with each other as well as the base on Farquhar Island.
- Are qualified skippers, with STCW qualifications and have impeccable boat handling skills.
- Have first aid experience.

Angling teams will be split up into groups of two anglers per skiff and guide.





# FARQUHAR ACCOMMODATION



## *The Guest House*

The guest house consists of three double/twin duplex style chalets each containing two separate bedrooms which face the magnificent Farquhar lagoon. Each bedroom is fully air-conditioned, has two single beds and an en-suite bedroom as well as an outdoor shower. Rooms are equipped with 220 volt electricity and have a consistent supply of hot water. There is full housekeeping which includes laundry.

The communal area is equipped with all the necessary features to make your stay one of comfort-in-style, including an exceptional dining area and a fully stocked bar. A full house buffet breakfast is served between 07h00 and 08h00, lunch will be in the form of a packed lunch on the water and dinner will be served between 19h30 – 21h30. The chef prepares a mix of Creole and international dishes and incorporates fresh fish on a daily basis, with fruit and vegetables, which are farmed in the Alphonse garden.

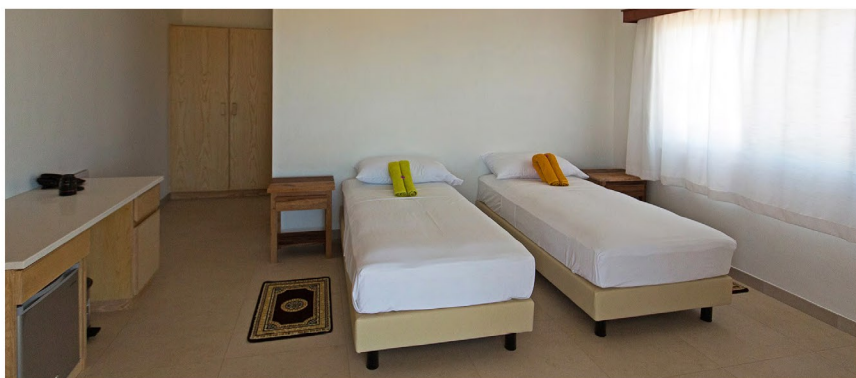
The guest house is fully equipped with snorkelling gear that is available for all guests to use. Sunset events, daily bell ringers and mesmerising encounters with captivating marine life and experiencing the true essence of an untouched paradise, all in picture-perfect surroundings that will enhance every sensation.

**AT A GLANCE**

- Approx Size..... 38 m<sup>2</sup>
- Occupancy ..... 2 Adults
- Beds ..... 1 King / Twin [on request]
- View..... Verandah with Ocean Views

**ROOM HIGHLIGHTS**

- Easy beach access, with the ocean only meters away
- Cupboards
- Indoor & outdoor shower
- En-suite bathroom
- Fully air-conditioned



**ESSENTIALS & AMENITIES**

Air-conditioned | Beach Towels | Indoor & Outdoor Shower  
L'Occitane Amenities | Yeti Coolers



# IMPORTANT POINTS

## *Please Take Note...*

### WEATHER

Seychelles is typically hot and somewhat humid with midday temperatures hovering at  $\pm 35^{\circ}$  Celsius [ $\pm 90^{\circ}$  Fahrenheit]. The evenings are also invariably warm with the exception of the first and last few weeks of the season, when there may be a strong, cooling breeze.

### THE FISHING SEASON AT FARQUHAR

The season runs from September until early May. Due to Farquhar being a further  $3^{\circ}$  south of Alphonse Island, the south-easterly monsoon winds blow insistently from June to August. We stick to the fore mentioned dates to ensure you have an unforgettable fishing experience.

### HOURS OF DAYLIGHT

Due to its proximity to the equator, there is no real twilight in the Seychelles. The sun rises quickly at around 06h15, and sets with equal swiftness at about 18h30. This varies by only minutes throughout the year, giving nearly a full 12 hours of daylight for 365 days a year.

### CONSERVATION DONATION

There is a conservation donation of US\$175 per week [US\$25 per day]. This will be included on your confirmation invoice and is settled prior to arrival. All packages exclude this conservation donation which is given to the Island Conservation Society for the preservation of nature in the Seychelles.

### FROM SCENE OF ACCIDENT MEDIVAC INSURANCE

You are required to obtain "From Scene of Accident Medivac Insurance". Please supply these details prior to arrival on the Island. Alphonse Island Lodge Limited and agents cannot assume any financial responsibility for consequences incurred if this has not been obtained.

### TRAVEL INSURANCE

You are required to obtain travel insurance that will cover any costs incurred due to flight or trip delays for any reason.

### INDEMNITY FORM

You are required to sign an indemnity form before boarding the transfer vessel.

### INOCULATIONS & HEALTH

No inoculations are legally required for entry. However, you may want to check with your local immunization and inoculation clinic for their recommendations on health precautions for travel to the Seychelles. Some travellers elect to protect themselves against hepatitis A with an immunoglobulin injection [short-term protection] or the longer lasting vaccine. Other inoculations may be required if you are planning a trip extension to parts of Africa.

### FLIGHT TIMES

NB: Please check flight times as they vary. The flights leave Mahé from the IDC hangar and arrive on Farquhar one hour and forty-five minutes later. It then departs Farquhar 45 minutes after arriving and will land back at the IDC Hangar two-and-a-half hours after departing.

### LUGGAGE RESTRICTIONS

**Your check in luggage is strictly limited to 15 kg [33 pounds] per person, and 5 kg [12 pounds] carry-on luggage.** This is a strict policy that allows us to deliver fresh food produce to the boat. If it is not possible to load extra luggage, it will have to be repacked and left in Mahé until your return.

PLEASE ADHERE TO THE LIMITS. It is suggested that lighter soft-shell luggage is used. Pack a separate bag with excess equipment to avoid having to repack at the airport. Excess luggage can be left with an Alphonse representative at the hangar.

### FISHING CLOTHING

Lightweight long sleeve shirts and long pants that can be zipped off are recommended. Sunscreen with a minimum protection factor of at least 30 is required for any exposed skin areas. A buff is of great importance for sun protection of your face. Sun gloves will help protect your hands.

### COMMUNICATION

The phone service is operated via satellite and there is no Wi-Fi.

Guests are able to purchase phone cards from the guesthouse manager to make calls which cost US\$15. These are payable in cash to the guesthouse manager.

We advise that you leave the contact details of Alphonse Island with your family and friends. The lodge satellite phone is only switched on at certain times for logistical updates so a message can be passed onto you at this time.

Alphonse Island Number: +248-4-22-9700 [GMT+04:00].

### ELECTRICITY SUPPLY

The lodge has 24-hour electrical current [240 volt, 50 cycles AC] with British plug points. A European electrical current adapter [three-point, square-pin] is necessary.

### WATER CONSUMPTION

There is a desalination plant at the guest house and the water from the faucets is safe to drink. We do not stock mineral water and will only supply it if you specifically requested prior to your arrival.

### BEVERAGES

Should you have any special beverage requirements please let us know so we can ensure it is on location for your arrival. There will be Seybrew beer and a selection of spirits and wine on location. It's important to remember that when you are on Farquhar, it is a "dry island" so we request that you do not give any alcohol to the local staff.

### GRATUITY GUIDELINE

If you wish to show appreciation to the general staff, we suggest a US\$250 per guest per week or US\$35 per day guideline. This is to be left with the guest house manager upon departure for equal distribution.

For the Fly Fishing Guides a US\$650 per angler per week, which is given to the head guide at the end of the week.





All tips are preferred to be paid in cash. If you wish to pay your tips by credit card a 5% credit card levy will apply.

### CURRENCY

You do not need to change your US\$ [US Dollars], € [Euros] or £ [Pounds] into the local currency SCR [Seychelles Rupees]. The guest house accepts Rupees, Dollars, Euros and Pounds. Please bring sufficient cash to settle tackle bills, tips and other costs incurred. There is a credit card facility onsite. All tabs settled by credit card will incur a 5% credit card levy.

### DUTY FREE ALLOWANCE

200 cigarettes or 50 cigars, one litre spirits and two litres wine.

### CANCELLATION POLICY

Should you need to cancel your trip, at this stage of the booking, a fee of 100% shall be levied. This cancellation must be confirmed in writing.

- A 10% fee shall be levied if cancellation is made more than 180 days prior to arrival.
- A 10% fee shall be levied if the reservation is moved to an alternative date within the same season.
- A fee of 50% shall be levied if cancellation is between 180 and 90 days prior to arrival.
- A fee of 100% shall be levied if cancellation is 90 days or less prior to arrival.

### WADING

The hard white sand, turtlegrass or coral flats of the Seychelles make for easy wading, separating it from other destinations in the world. As most of the fishing will be done whilst wading, good protective footwear is essential. Standard diver's neoprene booties with a reinforced rubber sole are not appropriate. A more protective flats wading boots must be worn. There are a number of purpose made boots on the market, which are excellent. See suggested brands in tackle and gear check list at the end of this document.

#### DANGERS TO WATCH OUT FOR WHILST WADING

**Stingrays:** Some atolls host large numbers of stingrays on the flats. Most species have a venomous, barbed spine near the base of their tails that they can use for defence. These spines can inflict a nasty wound, should an unwary wader inadvertently stand on a stingray. These often sedentary or slow moving fish are easy to see and avoid, and to date no anglers have had any problems with these docile creatures.

**Stonefish:** Found mainly in the shallows on the coral edges of reef flats, stonefish are not only lethally toxic but are also very well camouflaged and will not move unless touched. A stonefish has 13 strong hollow spines through which it injects its venom and these will pass through a thin rubber sole with ease. For this reason all wading should be done wearing thick-soled wading boots.

**Cone Shells:** Fish-eating cones live in crevices among the coral or half covered by sand awaiting their prey which they attack by shooting out a dart that injects a paralysing venom. The venom from certain species can be fatal, however proper footwear will ensure your safety.

**Sharks:** Frequently encountered whilst wading in Seychelles, sharks are inquisitive and may pause for an instant and give you the once over, but if you remain calm and quietly stand your ground, these magnificent creatures will not bother you.



# TACKLE & GEAR

## Check List

### TACKLE & GEAR

The guest house will have a full range of tackle on sale such as fly lines, flies, clothing, leader and various other items.

### ROD & REEL LOAN

Fly fishing outfits consisting of Thomas and Thomas fly rods and Shilton reels, loaded with 300 yards of Cortland braided backing can be loaned at no charge. Fly lines will need to be purchased from the shop to avoid fishing with lines damaged from previous anglers. There is a full range of flies that are custom tied for Alphonse Fishing Co. destinations on the right hooks and with the correct material. It's important that angler's pre book the rod hire as well as tackle to insure that we have sufficient stock. All tackle sales may be settled at the end of your trip upon check out at the guest house. All rod breakages are for your account and will be billed at US\$150 per rod.

#### RECOMMENDED BONEFISH & PERMIT OUTFIT

- 2 x 9-foot 9-weight fly rod [1 x Spare]
- 1 x High quality large arbor saltwater series reel, with a strong smooth drag to match the fly rod. Load the reel with two to three hundred meters of 50lbs braid.
- 1 x High quality weight forward tropical floating line, suitable for warm water conditions.

#### RECOMMENDED TRIGGERFISH, BUMPHEAD PARROTFISH & MILKFISH OUTFIT

- 1 x 9-foot 10-weight fly rod
- 1 x High quality large arbor saltwater series reel, with a strong smooth drag to match the fly rod. Load the reel with three hundred meters of 50lbs braid.
- 1 x High quality weight forward tropical floating line, suitable for warm water conditions.

#### RECOMMENDED GIANT TREVALLY, BLUEFIN TREVALLY, BARRACUDA & BLUEWATER

- 2 x 9-foot 12-weight fly rod [1 x Spare]
- 1 x High quality large arbor saltwater series reel, with a strong smooth drag to match the 12-weight fly rod. The reel should be loaded with three hundred meters of 80lbs braid.
- 2 x High quality heavy weight forward tropical floating line, suitable for warm water conditions.

#### TERMINAL TACKLE

- 1 x 15 lb fluorocarbon tippet material
- 1 x 20 lb fluorocarbon tippet material
- 1 x 25 lb fluorocarbon tippet material
- 1 x 30 lb fluorocarbon tippet material
- 1 x 130 lbs Suffix Zippy soft mono

#### FLIES

It's critical all anglers carry a complete selection of flies tied the correct way with the correct materials and on the correct hooks.

We recommend the following fly selection, which will cover all your fishing.

A full selection of flies can be purchased on Farquhar and pre-ordered fly packs can be made up for your convenience.

#### BONEFISH

- 4 x Gotchas #6
- 4 x Christmas Island Special [Orange] #6
- 4 x Pillow Talk # 6
- 4 x Fleeing Crab Cream/Tan #8

#### PERMIT, BUMPHEAD PARROTFISH & TRIGGERFISH

- 12 x Alphexo Crab [White, Tan and Olive] #2
- 4 x Fishient Crab #2

#### MILKFISH

- 4 x Milkydream Chartreuse #2
- 4 x Milkydream Olive Rams Wool #2

#### GIANT TREVALLY, BLUEFIN TREVALLY & BARRACUDA

- 2 x GT Brush Fly [Tan] #5/0 SC15-2H
- 4 x GT Brush Fly [Black] #5/0 SC15-2H
- 2 x GT Brush Fly #5/0 SC15-2H
- 4 x GT Barrel Popper #8/0 SL12S

#### BLUEWATER & BILLFISH

- 1 x Pink, White & Purple Cam Seglar Sailfish Tube Tandem #8/0 x 2.



# CLOTHING & ACCESSORY

## Check List

Although a minimal amount of clothing is required when fishing the flats, it is important to follow the recommended list.

- 3 x UV proof flats shirt [soft natural colours – as bright colours alert fish!]
- 1 x UV proof zip-off pants [soft natural colours]
- 1 x UV proof short pants [soft natural colours]
- 1 x Rain jacket [must be lightweight]
- 1 x Sungloves
- 1 x Cycling / lycra shorts for wearing under your flats shorts to prevent chafing
- 1 x Flats wading boot, with thick soles and good ankle support  
*[Please refrain from using neoprene booties. They do not offer adequate protection!]*
- 1 x Gravel guards
- 1 x Waterproof fly box to prevent your flies from rusting.
- 2 x Polarized sunglasses [Costa Del Mar's 580 amber and green mirror lenses]
- 1 x Sunscreen [SPF 30+]
- 1 x Lip block
- 2 x Buffs
- 1 x Hat / cap
- 1 x Stripping gloves
- 1 x Waterproof backpack
- 1 x Headlamp or torch
- 1 x Soft tissue for drying & cleaning lenses
- 1 x Pliers for removing hooks and squashing barbs

We hope this information helps to enhance your fishing experience at Farquhar Atoll. Should there be any further assistance you require, please do not hesitate to contact us on

[info@rippsporting.com](mailto:info@rippsporting.com)